



**MARINE NOTICE: PMA/02/2019**

**Feb 2019**

Page 1 of 2

**Subject: Completion of Offshore Marine Construction Work  
At Bahrain LNG Terminal**

- PMA Marine Notice number; PMA/01/2017 is hereby canceled.

The offshore construction of Bahrain Liquefied Natural Gas (BLNG) terminal and associated platform is completed, the physical presence of the terminal and breakwater is visible, and located North East of Khalifa Bin Salman Port (KBSP). Aids to Navigation (AtoN) leading to the terminal have been installed at the positions below. All mariners are requested to note the same and navigate with caution in the vicinity of the terminal.

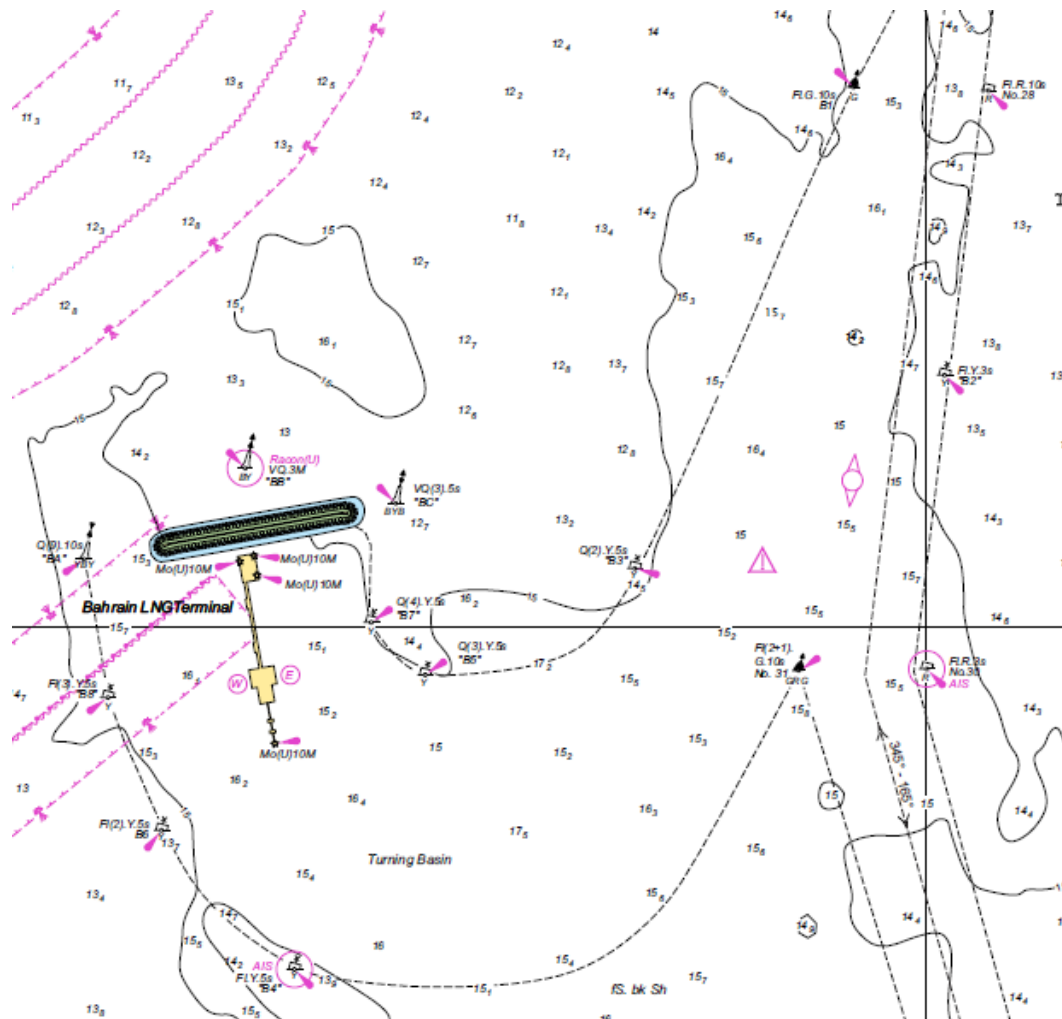
<b>BLNG Aids to Navigation Summary</b>									
Marker Number	As-Built Coordinate		Marker Type	Colour	Light Characteristic	Minimum Visible Light Range (NM)	Shape	system	
	latitude	longitude							
BAC Channel	B1	26° 14.788'N	50° 45.881'E	starboard lateral mark	green	Fl.G.10s	4	conical	
	B2	26° 14.368'N	50° 46.029'E	special mark	yellow	Fl.Y.3s	4	can	
	31	26° 13.937'N	50° 45.793'E	Preferred channel mark	green, red, green	Fl.(2+1).G.10s	4	conical	
BLNG Channel	B4	26° 13.491'N	50° 44.973'E	special mark	yellow	Fl.Y.5s	3	can	fitted with AIS
	B6	26° 13.706'N	50° 44.758'E	special mark	yellow	Fl.Y(2).5s	3	can	
	B8	26° 13.896'N	50° 44.670'E	special mark	yellow	Fl.Y(3).5s	3	can	
	B7	26° 14.010'N	50° 45.099'E	special mark	yellow	QkFl.Y(4).5s	3	can	
	B5	26° 13.933'N	50° 45.187'E	special mark	yellow	QkFl.Y(3).5s	3	can	
	B3	26° 14.086'N	50° 45.527'E	special mark	yellow	QkFl.(2).5s	3	can	
	BC	26° 14.181'N	50° 45.138'E	east cardinal	black, yellow, black	VQ (3)5s	3	cardinal	
	BA	26° 14.097'N	50° 44.633'E	west cardinal	yellow, black, yellow	Q (9)15s	3	cardinal	
BB	26° 14.229'N	50° 44.895'E	north cardinal	black, yellow	very Quick	3	cardinal	RACON (U)	

\*\* Terminal and Platform are fitted with aviation lights (red and white) with 3 and 10 miles range, givem morse "U" sig

**List of AtoN installed in the vicinity of BLNG Terminal**



- All vessels including dredgers, tug and barge / mariners transiting the area or when in the vicinity of the terminal or using Bahrain Approach Channel (BAC)), are reminded to:
  - Exercise extreme caution when transiting the area, and shall not cross the BLNG channel without permission.
  - Maintain close communication with Bahrain Port Control (VTMS) on VHF Ch. 74, for any updates and assistance as required.
- New charts edition for the area will be issued soon.



BLNG Terminal and approaches.